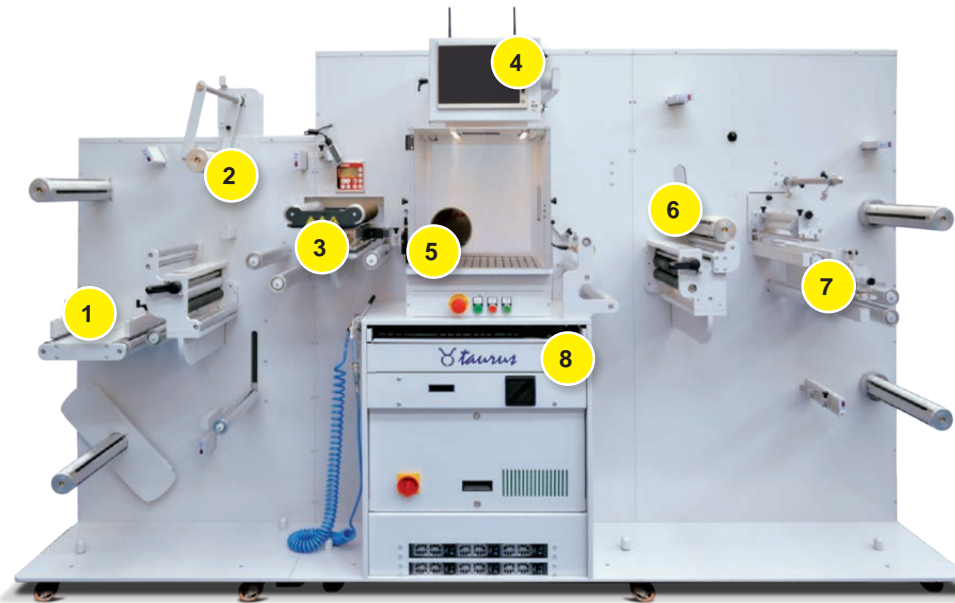


Power to Creativity!

No die tool anymore with Taurus, it is roll to roll digital converting solution powered by a Galvo system technology and equipped with a sealed CO₂ laser source to finish printed jobs at incredible cutting quality and speed.

Developed on 3 axes scanner and the latest in laser technology, this unit offers a better X and Y register and cut depth control (Z) allowing the user to cut with different power levels on the same labels.

This means an increase in quality and precision of label edges and a higher flexibility in label design supporting multiple laser processes and the laser beam will kiss-cut, slit and perforate most materials used in the label industry.



1. Splicetable
2. Cold laminating
3. Web guide
4. Integrated TouchScreen PC
5. Black-mark sensor
6. Matrix removal module
7. Slitting
8. Sliding drawer

Up to 70m/min depending on model, cut pattern and material being used this finisher offers unwinding, laminating, digital cutting, waste removing, rewinding and length slitting in a single pass.



WHY TAURUS?

Running label production in-house means reducing inventory requirements and costs.

Producing full bleed labels will no longer be a nightmare.

Laminating adds durability to your labels with no need for special media.

No need to order pre-die cut label rolls.

No need to order die tools.

A quick and simple solution for labels on demand.

TECHNICAL SPECIFICATIONS

Part number	TRS25PL	TRS35PL / TRS35PL-PLUS
Cutting Area	250mm x 250mm (9.84" x 9.84")	330mm x 330mm (13" x 13")
Cutting Speed	30m/min	30m/min (TRS35PL) 70m/min (TRS35PL-PLUS)
Web Width	50mm - 250mm (1.96" - 9.84")	50mm - 350mm (1.96" - 13.78")
Input Roll Diameter	500mm (19.68")	500mm (19.68")
Output Roll Diameter	400mm (15.74")	400mm (15.74")
Core Holder	Mechanical (3")	Pneumatic (3")
Laser Spot Size	up to 250 µm	up to 350 µm
Laser Source Power	150W - 10.25 µm	350W 10.25 µm
Laser Type	Single Head CO ₂	
Minimum Slitting Width	19mm (0.75")	
Type of Cut	kiss-cut, full cut, perforation, engraving	
Cut Ability	Both printed and unprinted media	
Media Type Allowed	Paper, Plastic Films (media test recommended)	
Power Requirements	220Vac 18A 4000W	220Vac 34A 7500W
Dimensions	280 x 74 x 166 cm (111" x 30" x 66")	290 x 92 x 180 cm (115" x 37" x 71")
Accessories Required	Water Chiller and Fume Extractor (contact us for more details)	

Working digitally means deliver your jobs just on demand and thanks to the smart features and high speed offered by Taurus the job size, path complexity and work execution of your finished labels will not be a limitation anymore.

EcoFriendly

Taurus is eco-friendly and energy efficient. The unit has an adaptor located on the back to giving the operator an option to connect a fume extractor. The air flow system prevents any material from burning and keeps the working area clean. The Taurus unit also has a build-in chiller. This water cooling system helps with monitoring and regulating the laser source temperature.

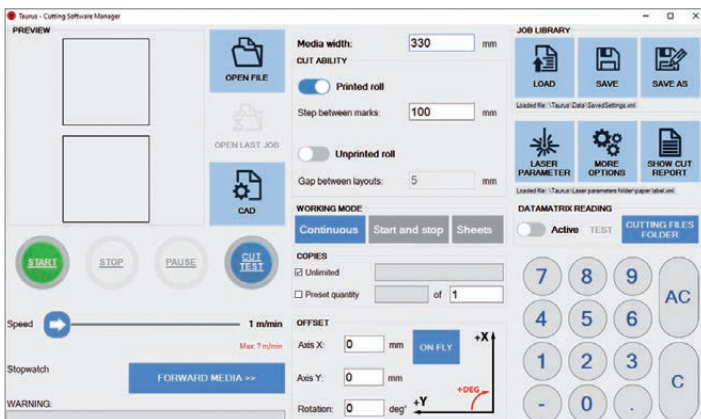


WEB GUIDE

As standard the unit features a web guide to guarantee the media path straight through the unit.

ULTRASONIC TENSION CONTROL

Each core is managed by its own tension media control to keep adjusted automatically the media tension on the roll regardless its diameter.



this innovative and smart cutting management software allows the operator to easily adjust the work speed and laser output for fabulous cutting, time optimization and less materials waste which in turn = **greater profits**.

The User friendly management software for Windows is compatible with Adobe PDF files.

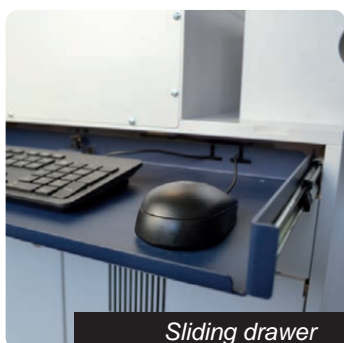
TOUCHSCREEN

Equipped with an integrated PC where the software is installed, the operator easily sets all the working parameters.



DATA MATRIX

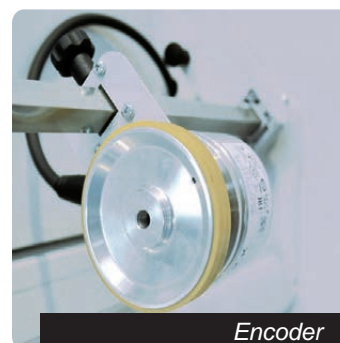
This feature allows system to load automatically the cut file related the job printed onto the media.



Sliding drawer



Splice table



Encoder

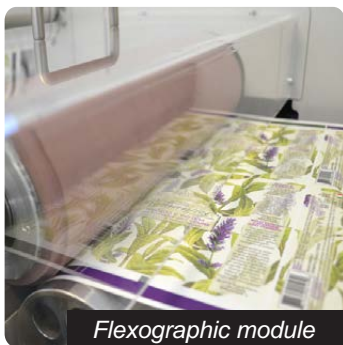


Slitter module

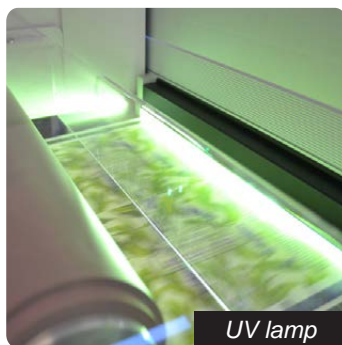
Higher level of finishing for your labels!

The UV varnish module is an accessory available for both Taurus models; it is a flexographic unit equipped with an anylox cylinder capable of depositing 3.5 grams of varnish per square meter with a semi-gloss finishing (it is possible to order the anylox cylinder with customised finishing specifications).

Installed in-line to the laser finishing system, the power of the UV lamp is automatically adjusted according to the laser cutting speed and when the media stops inside it, the protective shutter immediately intervenes.



Flexographic module



UV lamp

TECHNICAL SPECIFICATIONS

Media width	330mm (13")
Printing width	up to 320mm (12.60")
Media type	Paper, Plastic Films
Installed lamp	Mercury UV
Lamp model	UV Ray from 160W to cm
Lamp warranty	1000 hours
Power supply	400 VAC three-phase 50/60 Hz
Total absorption	7Kw
Compressed Air	6Bar
Accessories Included	Fume Extractor

ULTRA PERFORMANCE

The UV varnish station, available for both Taurus models, easy to use, allows an alternative media protection to the classic cold lamination to offer a superior finishing level.

