



***PRODUCT  
CATALOGUE***

# INDEX

▲ <b>DOORRAMS</b>	<b>8</b>
Enforcer 01 XS / Enforcer 01 / Enforcer 02	
▲ <b>TELESCOPIC TOOLS</b>	<b>10</b>
Telescopic Extruder / Telescopic Hammer	10
Breach-Buddy	11
▲ <b>GLASS BREACHING</b>	<b>12</b>
Glass Rake / Car Rake	
▲ <b>BOLT CUTTERS</b>	<b>13</b>
Boltcutter S / Boltcutter M / Boltcutter L	
▲ <b>BREACHING GRINDERS</b>	<b>17</b>
Breach Grinder 350 / Breach E-Grinder 350	17
Breach E-Grinder 250 / Breach E-Grinder 125	18
▲ <b>SAWS</b>	<b>21</b>
Breach Chainsaw / Breach Recipro	
▲ <b>ARMoured VEHICLE RESCUE</b>	<b>22</b>
A.V.E.K. System	
▲ <b>HYDRAULIC TOOLS</b>	<b>26</b>
PCT ST	26
HCT 51 ST	27
CCU10	28
GDR 200 ST	29
HBD 90 ST	30
GBP 10	32
CT 51 ST / DR 200 ST	33
▲ <b>PROTECTION</b>	<b>35</b>
S.E.P. Blanket	
▲ <b>TRAINING COURSES</b>	<b>38</b>
▲ <b>BREACH-CUBE</b>	<b>39</b>



## ABOUT US

Established in 2013, Tac-Up B.V. has grown to be a **leading design and manufacturing company in breaching and rescue solutions.**

Due to our extensive background in breaching and forcible entry and our dedicated in-house R&D: **We are able to create superior next level equipment to meet the high demands of our end users.**



POLITIE  
DIENST SPECIALE INTERVENTIES

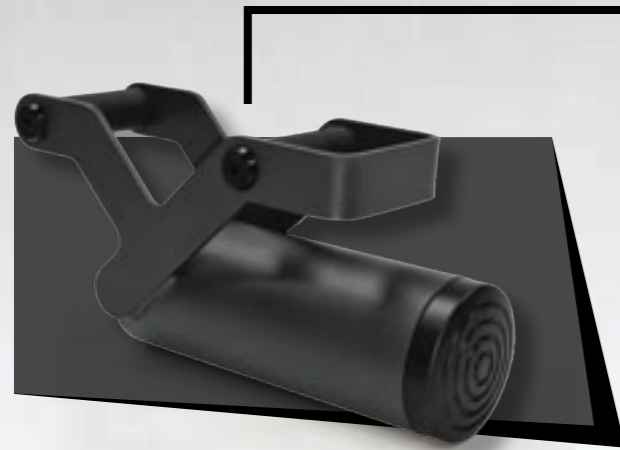
POLITIE  
DIENST SPECIALE INTERVENTIES

DOLMAR

4777

# DOORRAMS

Our Enforcer line is a highly effective range of doorrams. It's unique design, ergonomic **shock-absorbing** handlebars and **CNC profiled striking face**, makes these doorrams the choice for professionals. The **non-conductive** materials and **safety handguard** gives the operator even more trust in using the Enforcer line. All Enforcers **can be filled** to reach their maximal weight if desired. For the Enforcer 01 XS and 01 an optional **vehicle/wall mount** is available.



## ENFORCER 01

XS



- Size: **35 x 12 x 18 cm**
- Weight: **10 kg**
- Non-Conductive: **Yes**

Vehicle Mounting available



## ENFORCER 01



- Size: **46 x 14 x 20 cm**
- Weight: **15 kg**
- Non-Conductive: **Yes**

Vehicle Mounting available



## ENFORCER 02



- Size: **90 x 20 x 20 cm**
- Weight: **25 - 36 kg**
- Non-Conductive: **Yes**



VEHICLE MOUNTING  
ENFORCER 01 XS & 01

# TELESCOPIC TOOLS

Our latest line of telescopic tools feature only the **very best materials** available. **Aluminium, titanium** and **vacuum hardened steel** are used to create **super lightweight** and **ultra-strong breaching** tools.

Colours available:



## TELESCOPIC EXTRUDER



The Extruder uses our innovative 'hybrid' design. This means that one tool can be used to drive another into position without the need for a separate hammer.



Size: **46 cm retracted**  
**72 cm extended**

Weight: **2,8 kg**

## TELESCOPIC HAMMER



Wish to work more conventionally? This tool provides you with the weight needed! The larger profiled surface on top also makes it ideal for ramming.



Size: **46 cm retracted**  
**72 cm extended**

Weight: **3,6 kg**

## BREACH-BUDDY



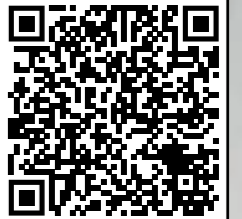
The Breach-Buddy has been developed as an **individually carried forcible entry tool**. It is designed to help users **open doors, create space for hydraulic tools** and can even be used as a **door wedge** to keep doors open. The Breach-Buddy's unique and modular design allow them to be connected 'end to end' to create additional leverage. By using materials like **titanium** we created a **very lightweight, small** and **versatile** tool which can be easily carried on your vest or belt.



Size: **34 x 12 x 3 cm**

Weight: **0,9 kg**

VIEW THE  
MOVIE,  
SCAN THE  
QR CODE.



Manual included



# GLASS BREACHING

## GLASS RAKE

Our Glass Rake is the perfect tool to safely defeat the very strongest of insulated glass windows. The hook on the rear allows you to easily and safely pull-out curtains and window shutters.



Size: **130 x 3,5 x 18 cm**

Weight: **6 kg**



## CAR RAKE

The Car Rake is designed to defeat 'laminated' car windows and has a built-in seatbelt cutter on the rear. Its slim profile allows for storage under vehicle floor mats or in between the seat and the console.



Size: **48 x 19 x 1,5 cm**

Weight: **1,6 kg**

Seatbelt cutter



Hardend steel insert

# BOLT CUTTERS

Very **high-quality** bolt cutters for **optimal** and **reliable results**. These are available in **different sizes** depending on your operational requirements.

## BOLT CUTTER S



Size: **47 x 14 x 3,5 cm**

Weight: **2 kg**

Cutting capacity: **8 mm**

## BOLT CUTTER M



Size: **62 x 14 x 3,5 cm**

Weight: **2,4 kg**

Cutting capacity: **9 mm**

## BOLT CUTTER L



Size: **78 x 17 x 4 cm**

Weight: **4,2 kg**

Cutting capacity: **11 mm**





# BREACHING GRINDERS

## BREACH GRINDER 350



The 350 is a high-powered fuel driven grinder. It comes equipped with the best breaching blade available on the market today. This beast will cut through everything.



Size: **78 x 26 x 40 cm**

Weight: **11 kg**

## BREACH E-GRINDER 350



At least as strong as its fuel driven brother, this machine is powered by 80 Volts of electrical power.



Size: **82 x 27 x 40 cm**

Weight: **14 kg**

**80V**



## BREACH E-GRINDER 230

The E-Grinder 230 is a compact yet powerful 40V grinder. The 230 is also fitted with our best 230 mm cutting blade.



Size: **60 x 24 x 14 cm**

Weight: **3,2 kg**

40V



## BREACH E-GRINDER 125

Our smallest E-grinder can be stowed away almost anywhere. The E-125 may have limited reach, but it is very effective on rebar, chains and padlocks.



Size: **46 x 14 x 14 cm**

Weight: **3,2 kg**

40V





# SAWS

## BREACH CHAINSAW



This is an extremely powerful chain-saw equipped with a purpose-built chain for breaching purposes. This saw is compact and comes complete with a back pack for convenience.



Size: **90 x 35 x 33 cm**

Weight: **9 kg**

## BREACH RECIPRO



This versatile machine equipped with multipurpose breaching blade allows you to cut laminated glass, steel, wood, plastics, etc.



Size: **55 x 25 x 10 cm**

Weight: **5 kg**

# ARMOURED VEHICLE RESCUE

The A.V.E.K (**Armoured Vehicle Extraction Kit**) can be used to open armoured vehicles in rescue situations. The A.V.E.K. comes standard in a ruggedized and waterproof transport case. Even the latest **VR9 cars** are no competition for this system. This system is the choice for many units around the globe.

## A.V.E.K. SYSTEM

Size: **48 x 37 x 17 cm**

Weight: **17 kg**





POLITIE  
EERST SPECIALE INTERVENTIES

MIDDEN

BAWEN  
Type

PC-1000  
1000



\*PCT ST 17

## PCT ST

The PCT is a compact, lightweight and well-balanced battery driven hydraulic combi tool. This tool is capable of cutting and spreading with a huge force and incredible speed.



Size: **676 x 270 x 275 mm\***

Weight: **14,4 kg\***

Available in 11", 14" or 17"



\*HCT ST 11

## HCT 51 ST

Compact and ultra-lightweight and client hand powered hydraulic combi tool. The HCT is capable of cutting and spreading with enormous force.



Size: **529 x 215 x 145 mm\***

Weight: **8,7 kg\***

Available in 11", 14" or 17"

Back-pack available





## CCU10

Most compact hydraulic cutter on the market. Battery driven and lightweight. Delivering some serious cutting power.



Size: **554 x 154 x 92 mm**

Weight: **4,9 kg**

Optional colours available:



## GDR 200 ST

Lightweight battery driven hydraulic door opener, creating 7 tons of pushing force with a stroke length of 300 mm.



Size: **193 x 728 x 277 mm**

Weight: **13,4 kg**



# HDB 90 ST

This is the most advanced door opener on the market. The HDB 90 allows for 100% silent placement and creates a massive force at a great speed. The HDB 90 is also available with a wireless control set for remote breaching applications.



Size: **760 x 300 x 85 mm**

Weight: **10,8 kg (tool)**  
**13,1 kg (back-pack)**



Wireless controle set





## GBP 10

This battery driven hydraulic backpack is capable of powering a variety of tools such as the door opener and combi tools. Carrying the weight of the pump on your back makes handling of the tools easier.



Size: **380 x 240 x 120 mm**

Weight: **7,5 kg**



## CT 51 ST

Compact and ultra-lightweight hydraulic combi tool. This tool is capable of cutting and spreading with an enormous force.



Size: **596 x 217 x 115 mm\***

Weight: **8,4 kg\***

Available in 11" or 14"

\*CT 14 ST



## DR 200 ST

Lightweight hydraulic door opener, creating 7 tons of pushing force with a stroke length of 300 mm.



Size: **112 x 590 x 160 mm**

Weight: **7,6 kg**



# PROTECTION

The S.E.P. Blanket gives you protection againsts **glass, barb-wire** and **sharp edges**.

## S.E.P. BLANKET



Size: **40 x 40 x 10 cm (folded)**  
**80 x 200 x 2 cm (unfolded)**

Weight: **2,8 kg**



# TRAINING COURSES

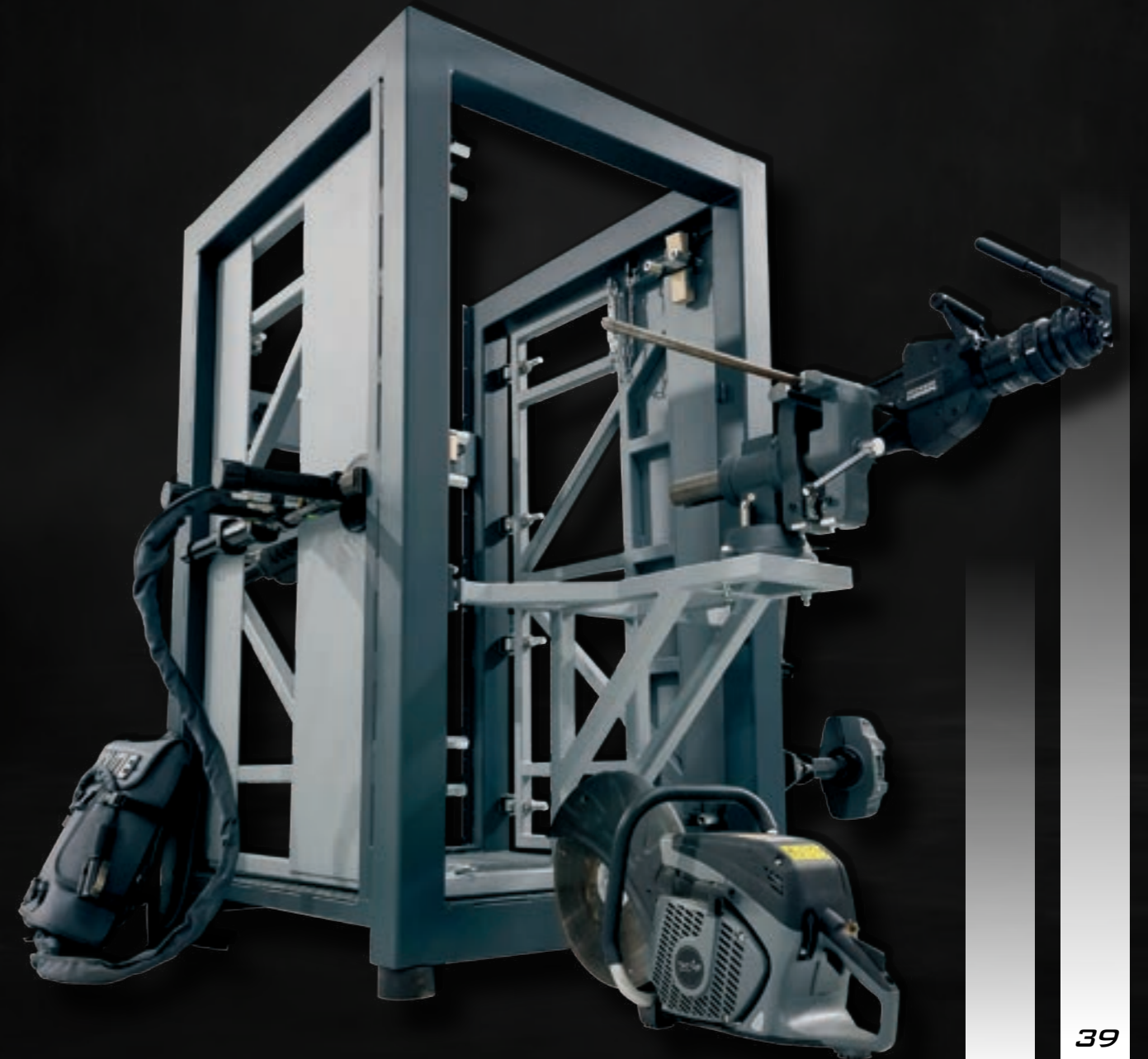
Tac-up can provide **extensive training** on our complete range of equipment. Our purpose built and **dedicated facility** provides a wide range of different rigs as well as a **hi-tech professional classroom**. Our **instructors are certified** and have many years of operational experience.



# BREACH-CUBE

A small but clever forcible entry training solution. With the same foot- print as a pallet (**120 x 80 cm**) it is easy to move around and to ship. The Breach Cube allows teams to practice the majority of common forcible entry techniques.

Size: 120 x 100 x 185 cm





*YOUR AUTHORIZED DEALER:*



**info@tac-up.nl**

