

Instruction Manual

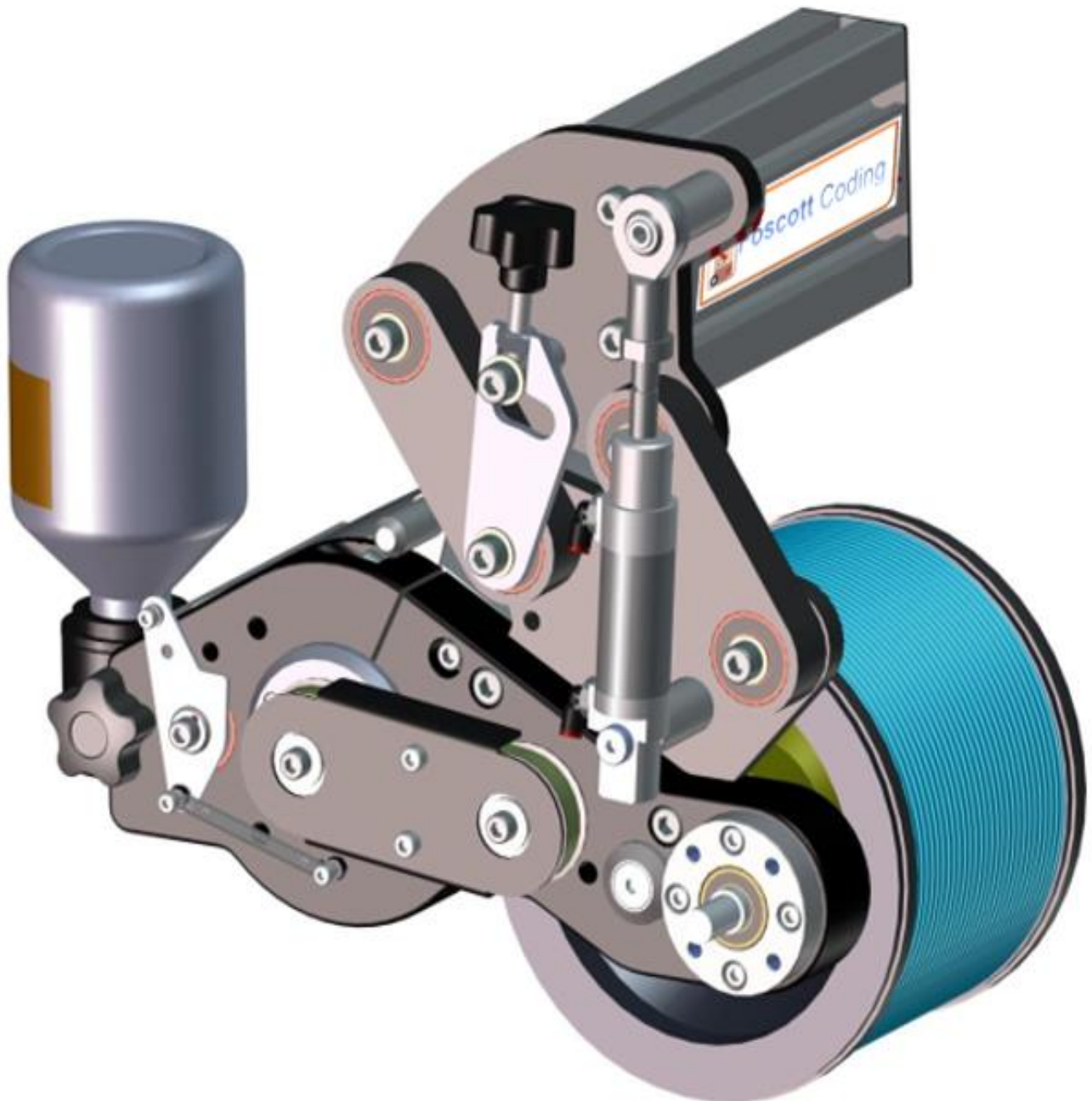


Table of contents

The machine

Introduction and Care.....	1
Description	1
Functions of the machine	2
Limits and exclusions.....	2
Allowed uses.....	2
Exclusions.....	3
Technical Features	4
Inking	4
Principle	4
Cartridge	4

Shipping and installation

Choice of ink	4
Shipping and handling	5
Packaging	5
Shipping conditions.....	5
Storage	5
Delivery and installation.....	6
Unpacking.....	6
Volume.....	7
Installation.....	9

Uses

Plates	11
Recommendation.....	11
Mounting.....	11
Removal.....	11
Inking	11

Plate Inking	12
Scraper / Roller Contact	13
Fitting an ink bottle and Ink Levels	14
Setting printing pressure	15
Roller / Characters pressure	15
Pressure drum / printing material	16
Printing	16
 Maintenance and Recycling	
Servicing and maintenance	17
General servicing and cleaning.....	17
Cleaning.....	17
Cleaning the roller	20
Cleaning and maintenance period.....	22
After use	22
Daily	22
Before each ink change	22
Monthly or in case of production break of over 1 week	22
Spare parts	23
General Break-up of components	24
Troubleshooting	26
Additional products	26
Cleaning agents	26
Hygiene products	26
Recycling.....	27
Packaging	27
Shipping.....	27
Recycling	27

This user manual contains all the necessary advice and recommendations that will ensure high quality results. Please follow these recommendations to obtain maximum satisfaction when using our machine.

The machine

Introduction and Care

This user manual contains all the necessary information for the assembly, start up, use, maintenance and handling of the machine.

The user manual must be readily available and stored near the corresponding machine.

The machine has been fitted with safety and protective devices in accordance with the present safety standards. Use of the machine for any non-standard purpose is liable to be a safety risk or cause material damage.

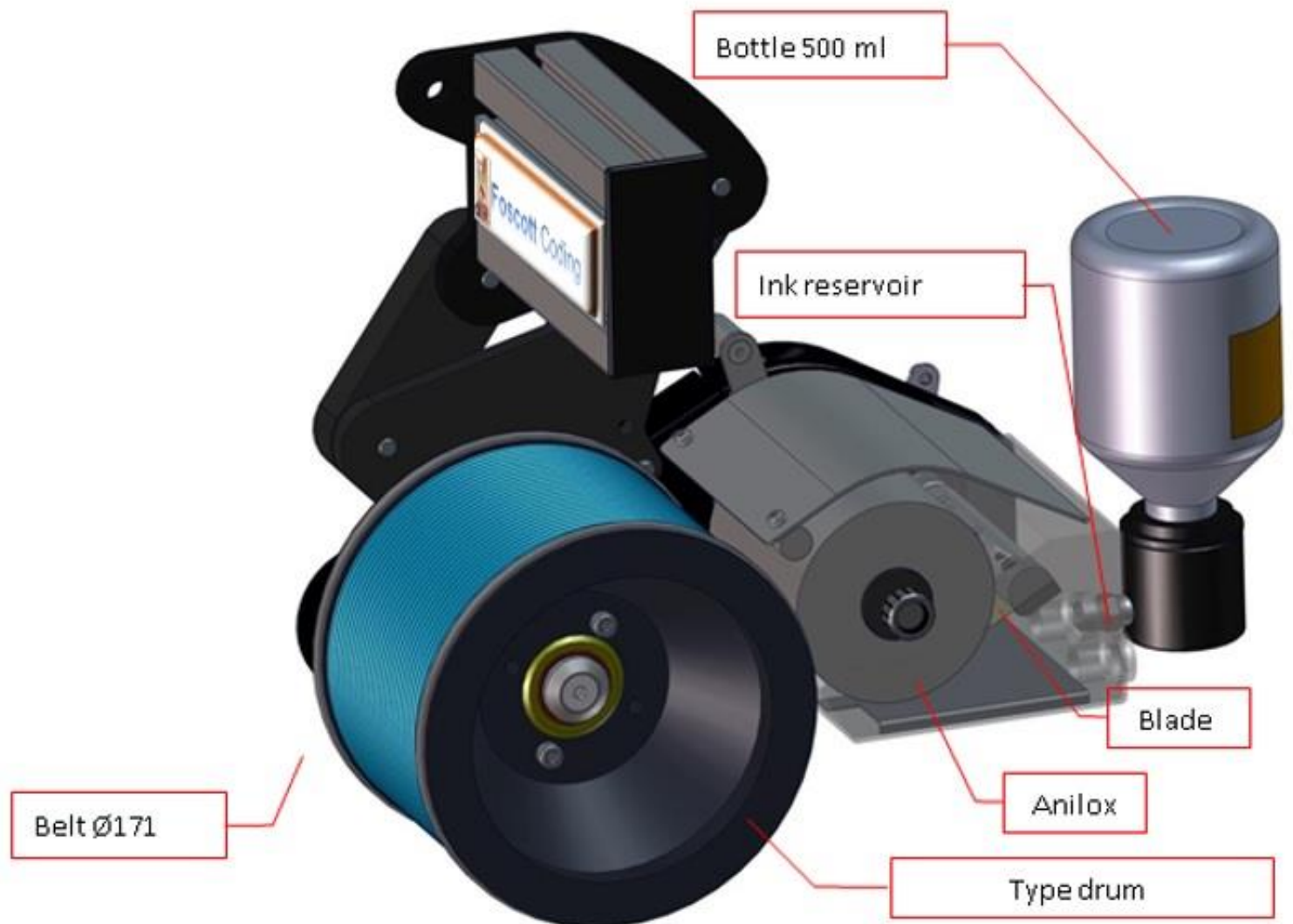
The machine must therefore be used strictly in accordance with the instructions and recommendations contained in the present manual.

Functions of the machine

The Codaflex is a flexographic marking apparatus, for continuous printing on varied printing materials like cardboard, plastic film, textiles, profiled support, metal, carpeting, flooring, The printing quality remains constant for linear speeds of between 1 and 150 meters /minute.

The machine includes:

- An Ertacetal printing roller with rubber belts for Baselock prints, or customized for photopolymer prints.
- A laser-engraved ceramic roller
- A steel scraper mounted on a handle with springs
- A stainless steel reservoir which can hold a 0.5litre bottle with a valve cap to ensure a constant level, or fed by an ink pump DE 2004 with feeder and overflow pipes.



Limits and exclusions

Any usage other than those mentioned in the present manual is not recommended.

Allowed uses

This apparatus must be used

- As a fixed work station
- By trained and skilled operators who have read the present document before using the machine
- Indoors, in a climate controlled area
- In an area with sufficient lighting - minimum 350 lux.
- In a dust and debris free zone
- Maintained and cleaned according to the instructions in the manual

Exclusions

- Do not use in humid zones
- Not to be used by more than one operator simultaneously

Do not use cleaning agents, or other products not recommended

Technical Features

	Codaflex-50	Codaflex-100
Drum Features		
Width	50 mm	100 mm
Diameter	171 mm	
Full diameter	530 mm	
Volume		
Length	396 mm	
Height	331 mm	
Width	168 mm	218 mm
Weight	11 kg	13 kg
Dimensions with packaging (L x H x W)	485 x 460 x 310 mm	
Weight with packaging	14 kg	16 kg
Mechanical Features		
Maximum printing speed	150 m/min	
Transmission	Grooved belt	

Inking

Principle

The ink cartridge with a valve cap can be mounted and removed rapidly. Different qualities of quick-drying ink are available.

Cartridge

These 500 ml ink cartridges are used on our Codaflex flexographic printers.

2 qualities of ink are available

- Quick drying (about 50 seconds on non-absorbent material)
- Instant drying (about 20 seconds on non-absorbent material).

Dry times approx depending on the product to be printed on

These inks may be used on different material: metal, plastic, food packaging, paper and cardboard.

Choice of ink

See table indicating ink features.

These documents are available in our general catalogue

Contact the Foscott Customer Service for further information, if necessary.

Shipping and installation

Shipping and handling

Packaging

The machine is packed in a cardboard box with pre-cut foam inserts.
Keep the packaging safely.

The machine must be repacked in its original packaging for any further transport.

Shipping conditions

The material must be transported upright in its packaging on a dry, stable and non-slippery surface.

Storage

The material must be stored in a dry, climate-controlled area.

Delivery and installation

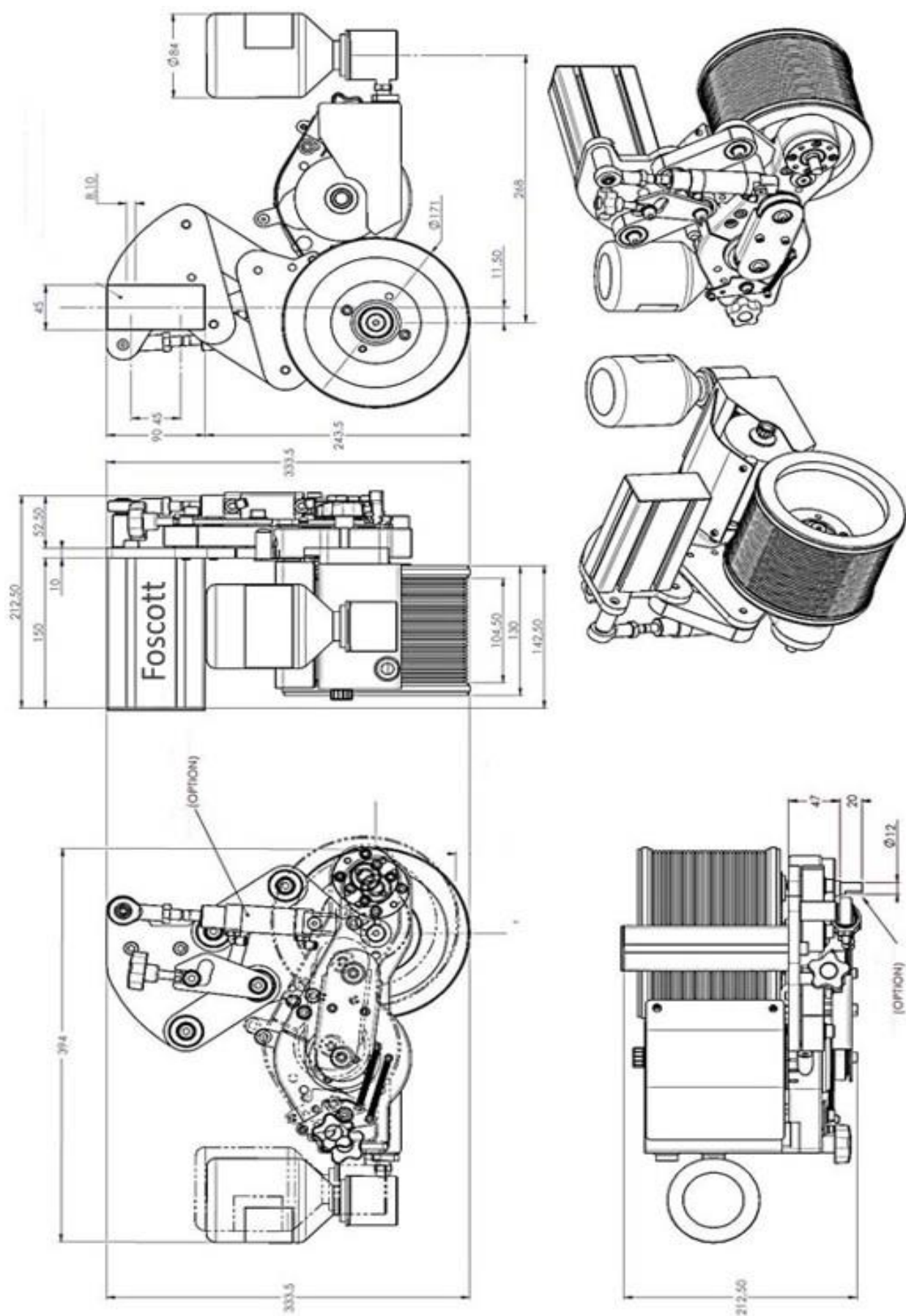
Unpacking

Unpack carefully so as not to damage the machine during unpacking
Keep the packaging intact to permit re-use in case of further transport
Check for the following items:

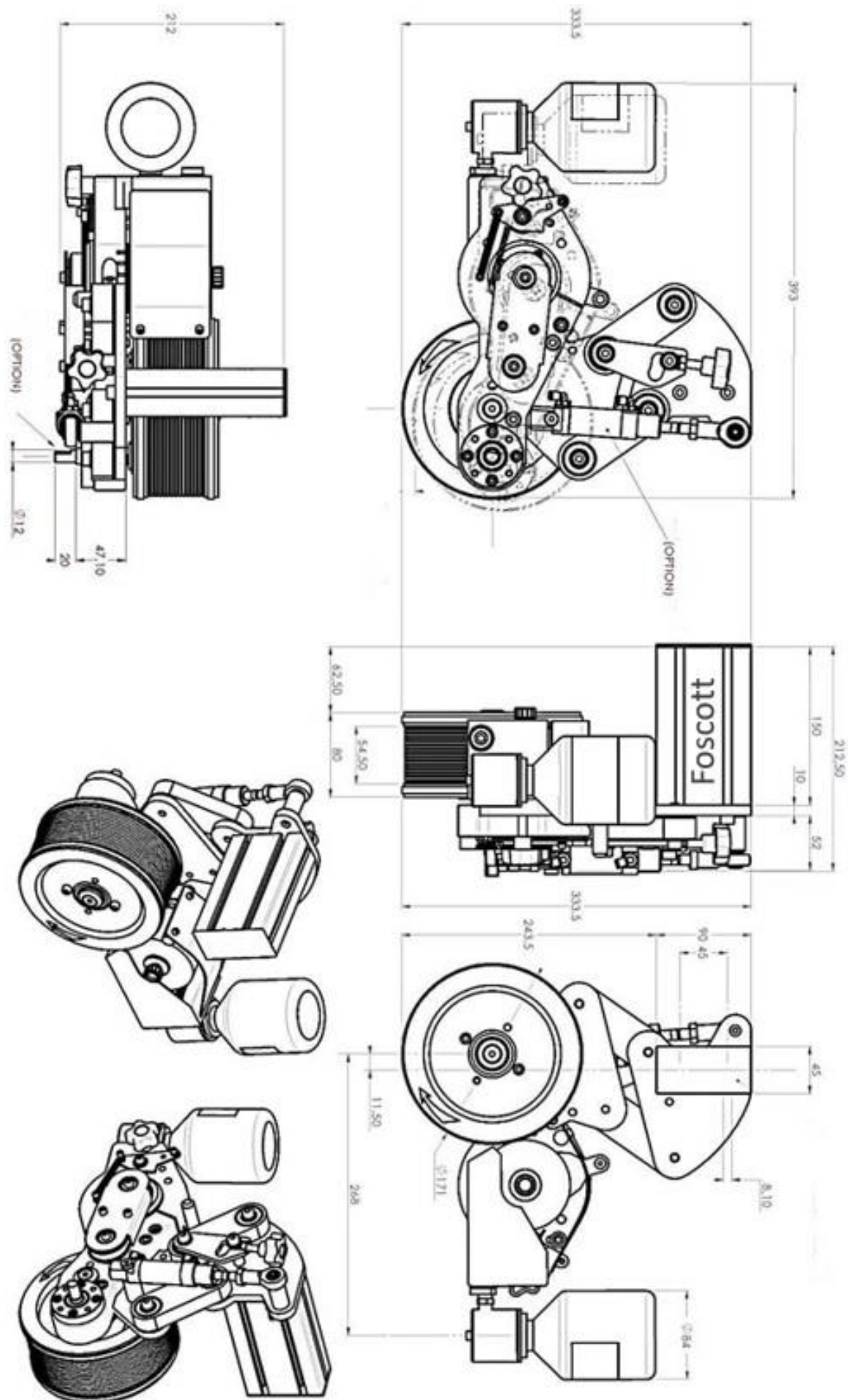
- 1 Codaflex
- 1 bottle with sprayer (empty, in plastic bag)
- 1 nylon cleaning brush (in plastic bag)
- 1 small nylon cleaning brush (in plastic bag)
- 1 CD ROM with instructions manual
- 1 CE norms certificate.

The bottle with sprayer is sold empty and without identification.
The identification and labelling will depend on the product used.

Codaflex-100 model

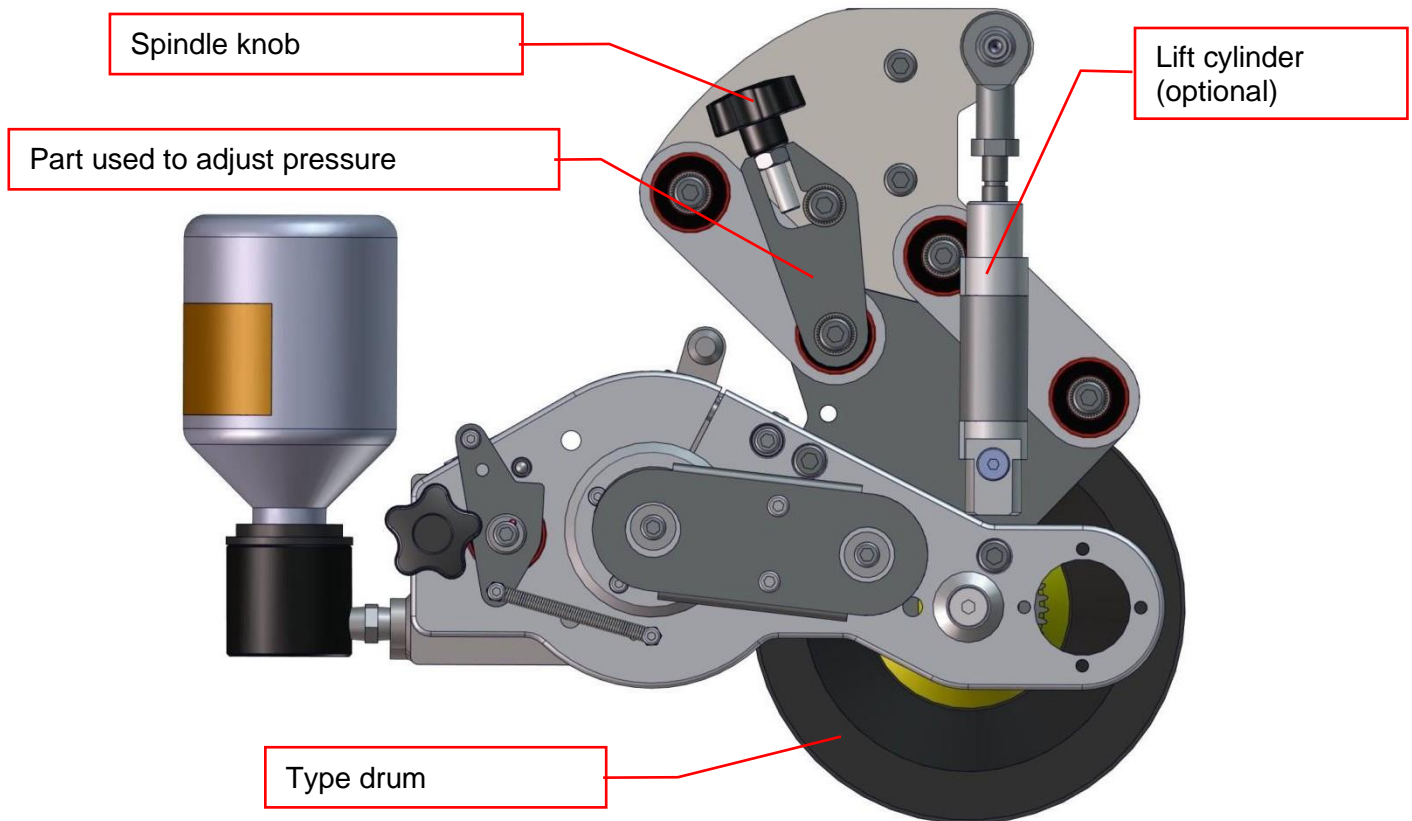


Codaflex-50 model

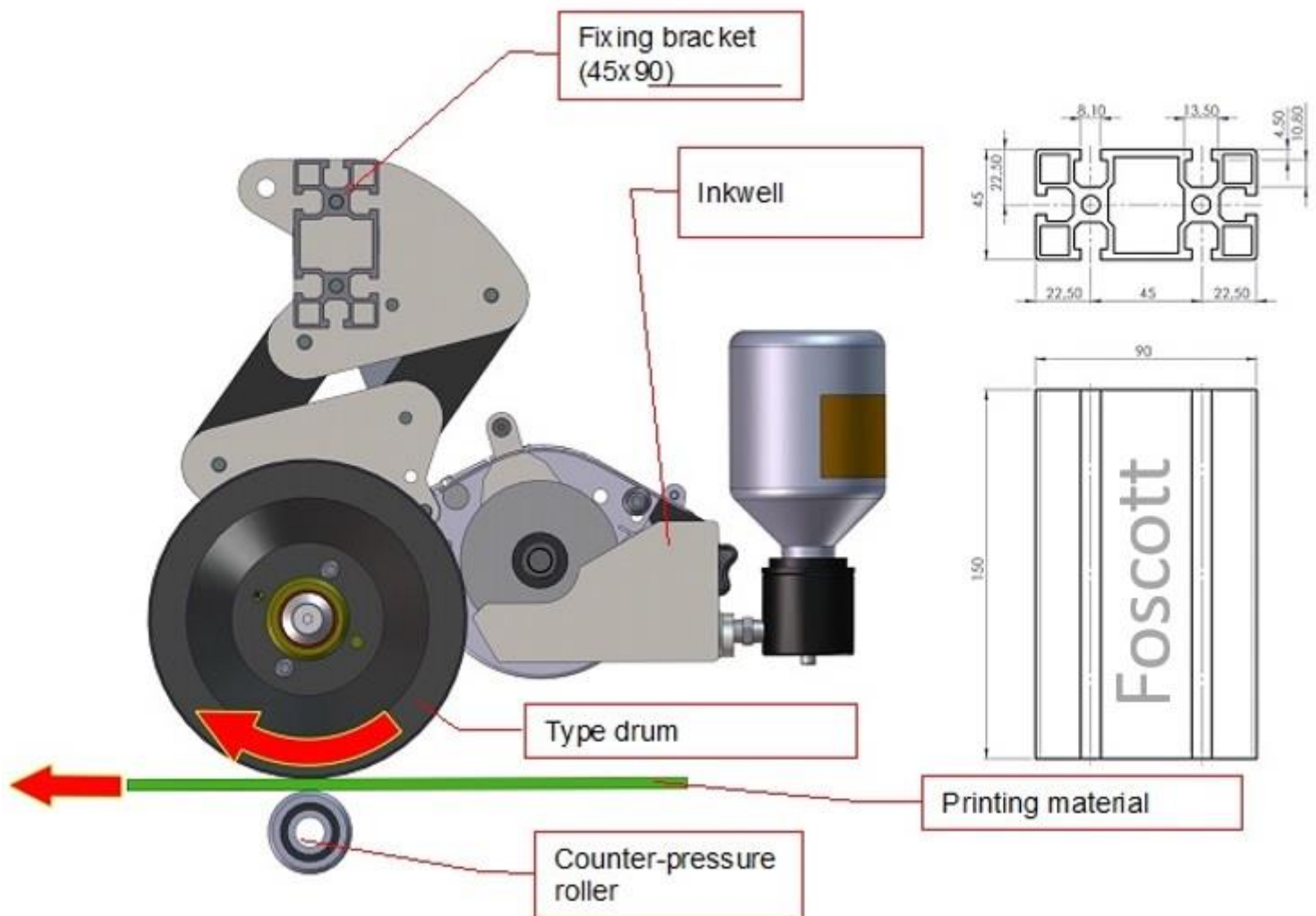


Installation

- Hold the type drum of the Codaflex in place with the help of a spindle – knob.



- Integrate the ROLLERFLEX V2 above the printing support, supported by a counter-pressure roller.
- Install the Codaflex in the direction corresponding to the circulation of the printing material
- The 45 by 90 bracket has grooves for fitting standard H M8 hexagonal nuts
- The material must be positioned so that the ink reservoir remains horizontal, to keep the level of ink required
- The material must be positioned so that the ink reservoir remains horizontal, to keep the level of ink required.



Settings

The machine comes with factory settings.

General checks

- Ensure that the Codaflex has been properly assembled and the rollers are fitted in the right direction corresponding to the material to be printed.
- Check that the reservoir is horizontal and check ink level
- Check the proper positioning and stability of the machine
- Check for vibrations on and around the machine

Uses

Plates

Recommendation

- Use Baselock rubber logos
- Contact Foscott Customer Service for information on other possible stereotypes on specific type rollers

Mounting

- Position the plate above the roller
- Press on the plate to clip it into place on the type roller

Removal

- Pull the plate perpendicularly at one end to remove

Inking

An easy mount valve cap ink cartridge of 500 ml is used on the Codaflex

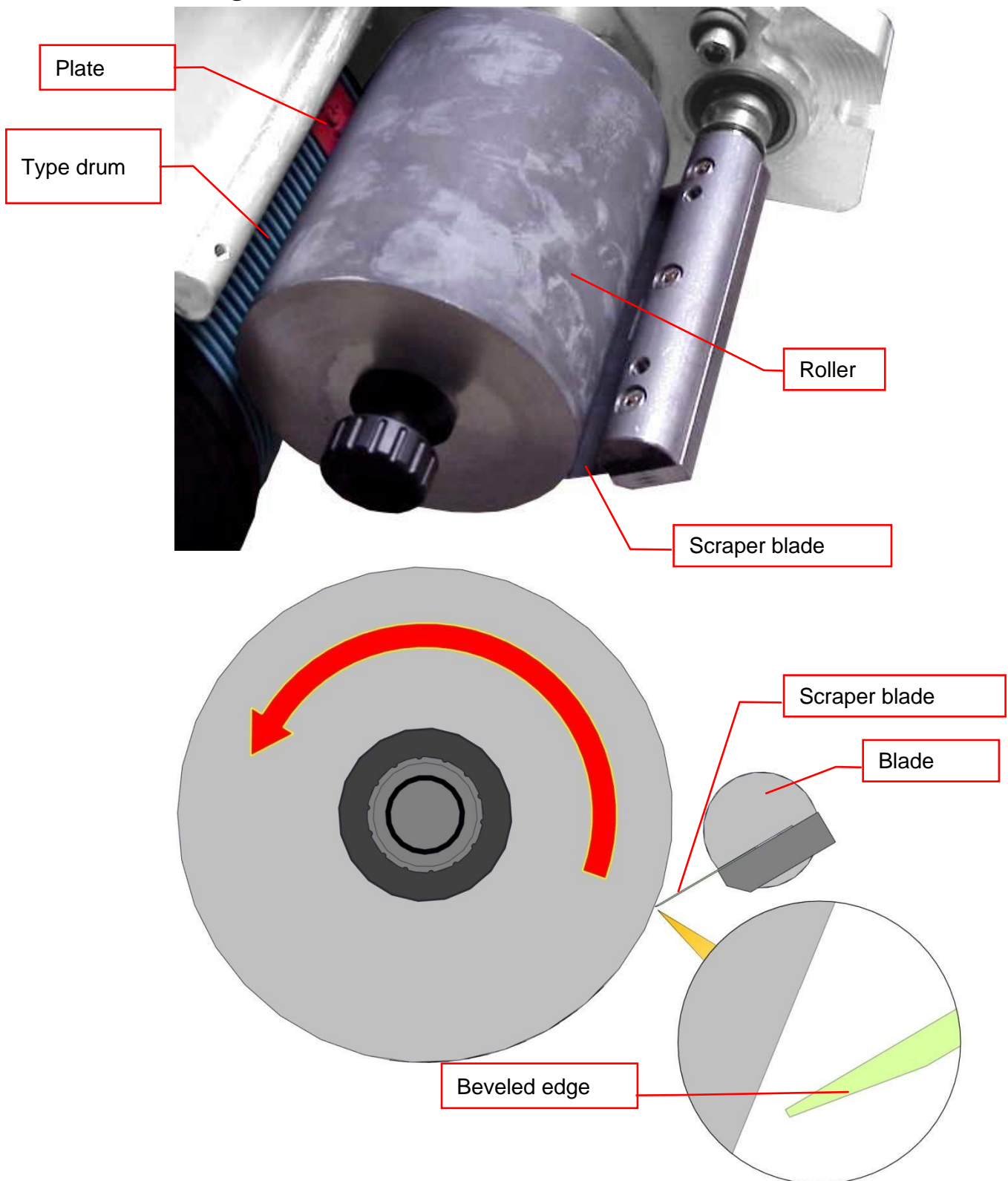
The "anti-splash" inkwell bottom eliminates any possible risks of ink splashes or overflow. The ink reservoir and the Anilox roller can be easily removed for easy cleaning and maintenance.

Ink changes are quick and easy.

Please read the Safety Procedures of any product before use.

Use the recommended safety equipment (gloves, ...)

Plate Inking

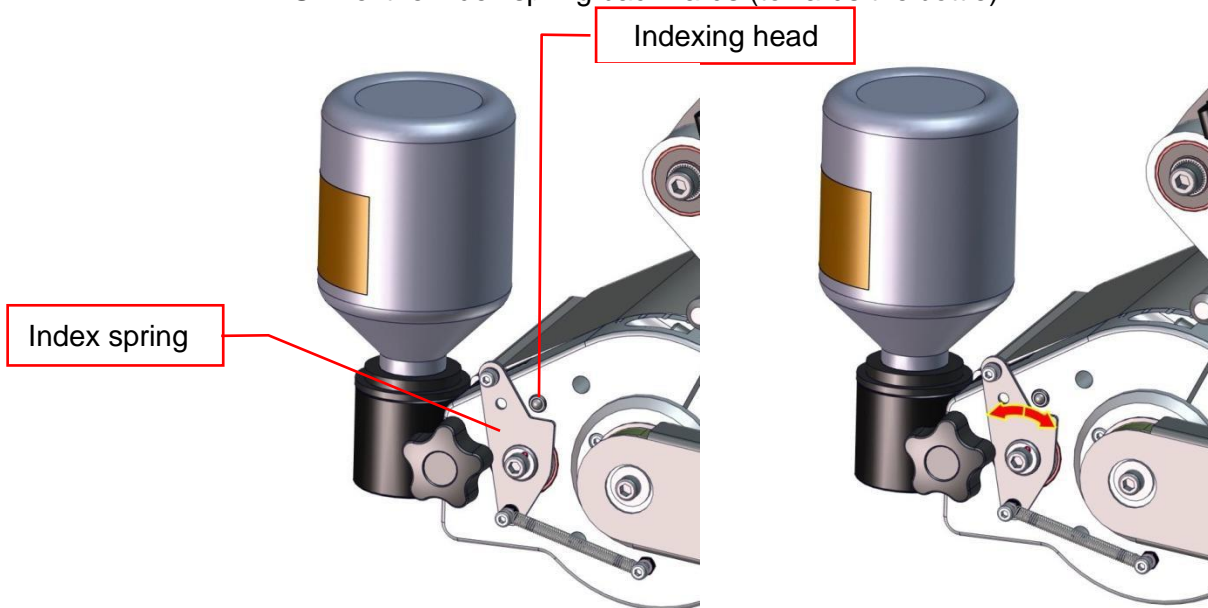


The steel scraper allows the calibration of the ink thickness. The blade is held against the pick-up roller by its spring handle, and the beveled-edge must face downwards (towards the bottom of the inkwell) for negative scraping. The scraping blade must be regularly changed as soon as the inking on the Roller is irregular.

Scraper / Roller Contact

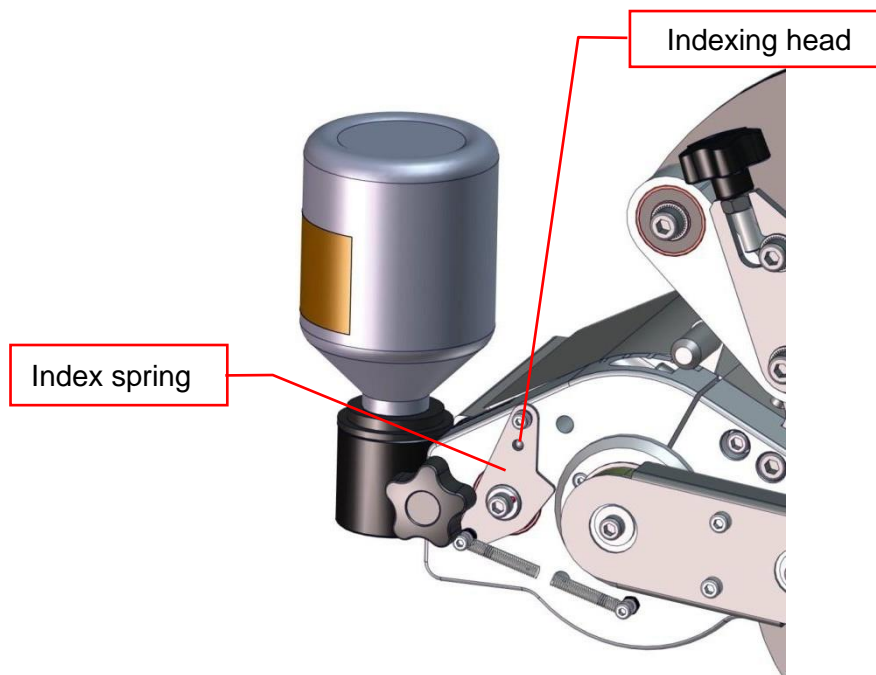
Start contact

- Unlock the index spring held in place by the indexing head.
- Swivel the index spring backwards (towards the bottle).



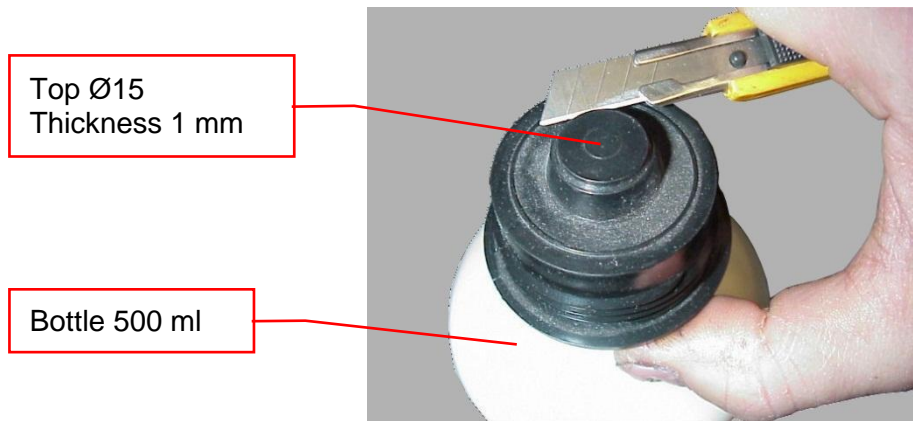
Stop contact

- Swivel the index spring to the front (towards the drum).
- Lock the index spring into position with the help of the indexing head.

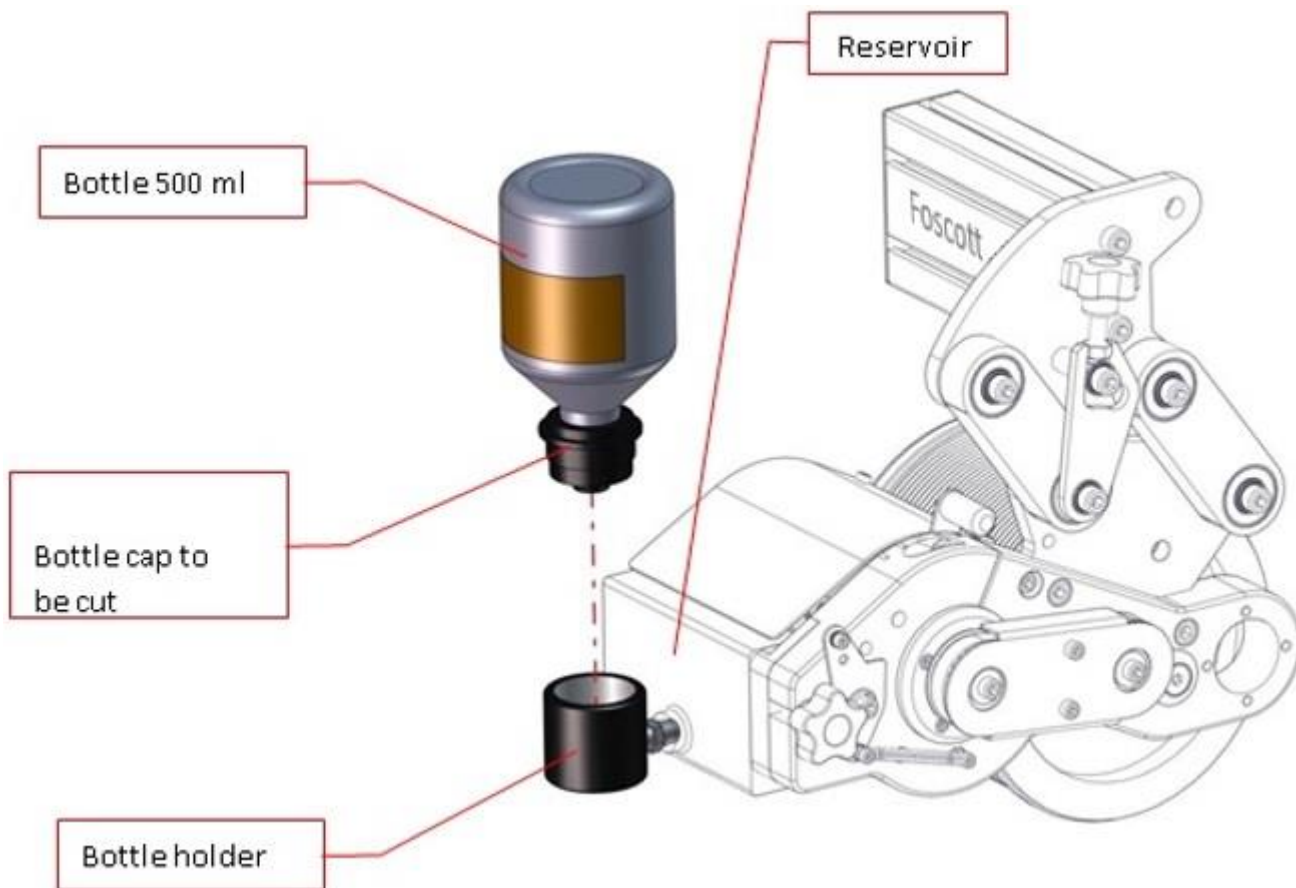


Fitting an ink bottle and Ink Levels

- Carefully snip off the top (diam. 15, thickness 1mm) of the cap.



- Screw on the 500 ml bottle to the bottle holder of the reservoir.
- Check that it has been screwed on properly.



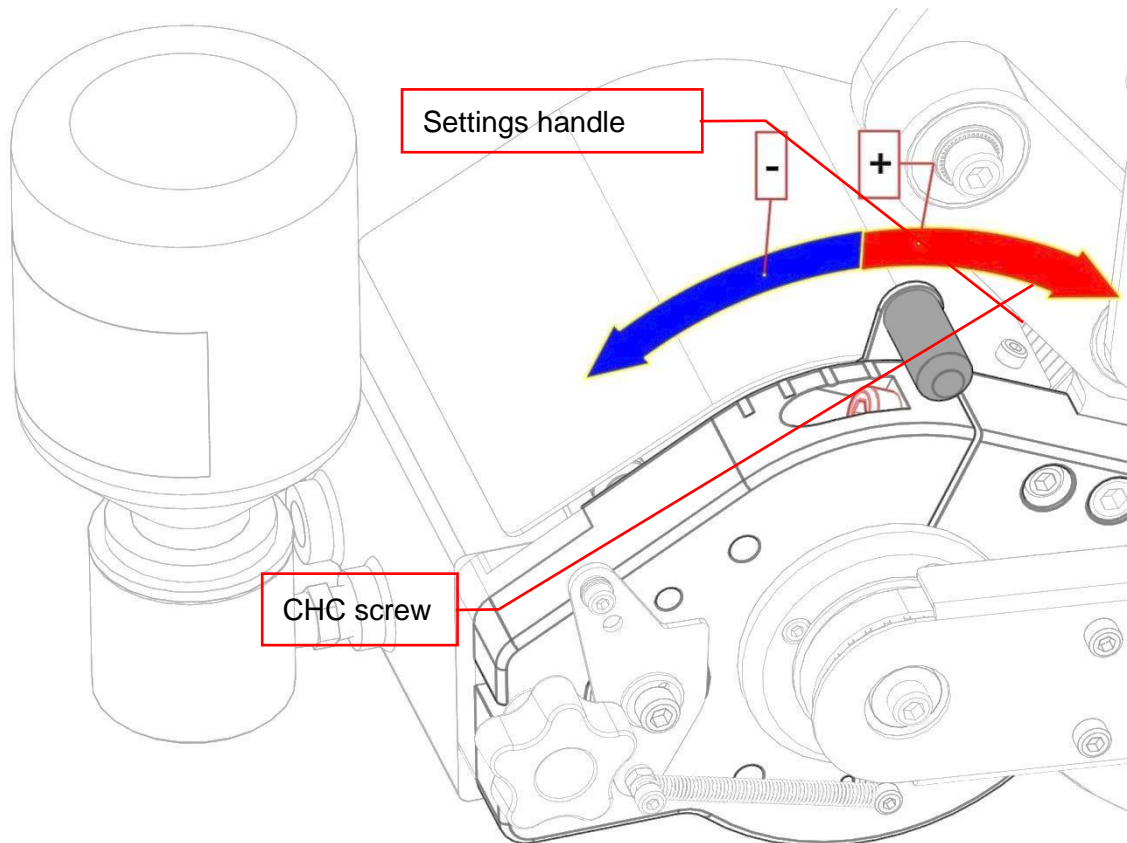
The screw inside the bottle holder is used to push the valve cap to ensure regular ink supply.

A solvent must be regularly added in case of unfavorable conditions (high temperature...) into the reservoir with the help of a pump

Setting printing pressure

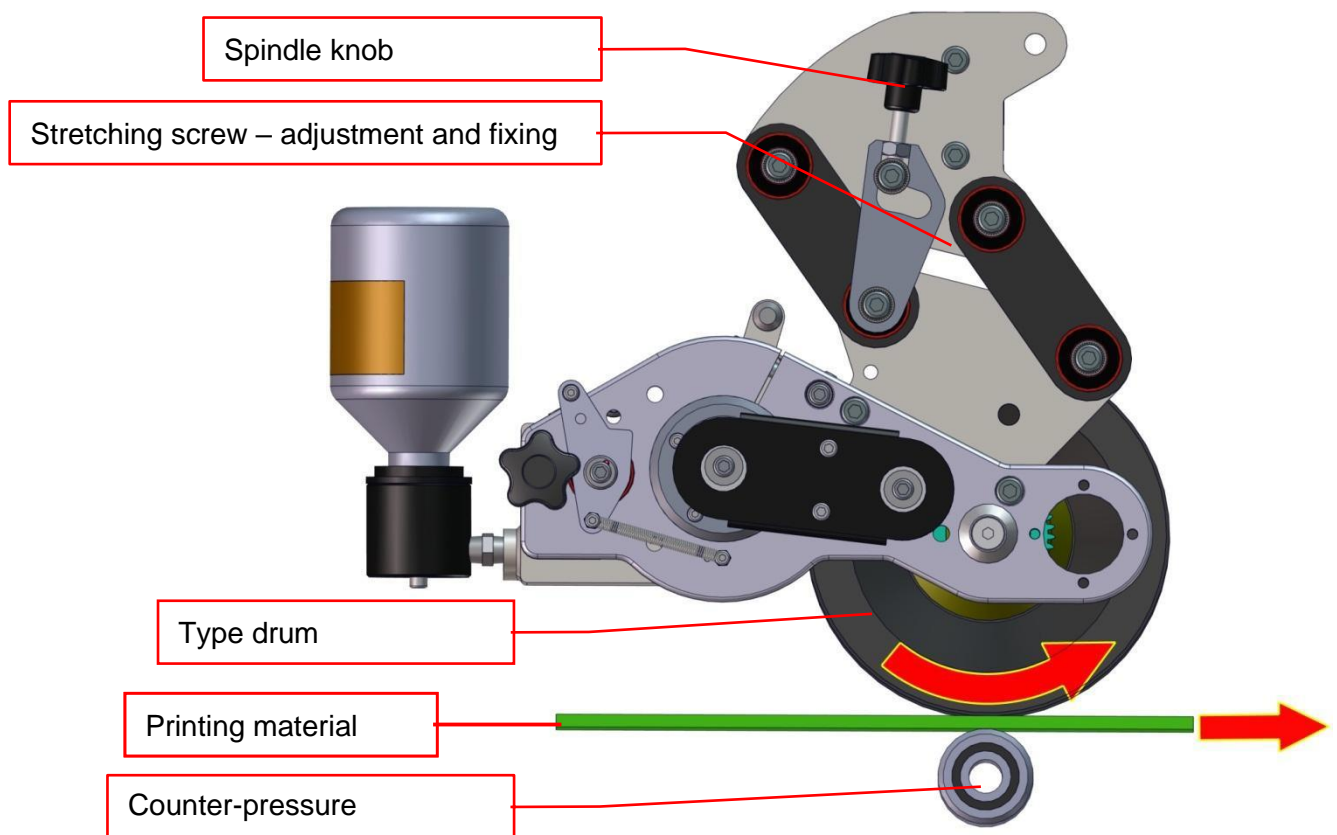
It is important to correctly set the printing pressure for good quality printing.

Roller / Characters pressure



- Unscrew the CHC screw with a size 5 hex key.
- To set Roller pressure swivel the settings handle to the front (drum side) for greater pressure and to the back (ink bottle side) for lower pressure.
- Screw on the CHC with the hex key.
- Check that the screw has been properly fastened.

Pressure drum / printing material



- Unfasten from stop position (type drum lifted) with the help of the stretching screw or the lift cylinder (optional).
- Tighten the screw (increase pressure) or unscrew (decrease pressure) the spindle knob to adjust printing pressure.

Printing

- Unlock from stop position with the help of the stretching screw or lift cylinder (optional).
- Check ink levels
- Put the scraper in contact with the roller
- Set roller /characters pressure
- Adjust type drum /printing material pressure.

Maintenance and Recycling

Servicing and maintenance

For any servicing, maintenance, troubleshooting, order or question, please call the Foscott Customer Service at + 44(0)2891822211.

General servicing and cleaning

Cleaning

To clean your printer use the Foscott Cleaning kit
Use the CP009 SOLVENT for cleaning and maintenance



Please read the Safety Procedures of any product before use.
Use the recommended safety equipment (gloves, ...)

The plate or the type drum must never be dipped in a solvent or any other product.

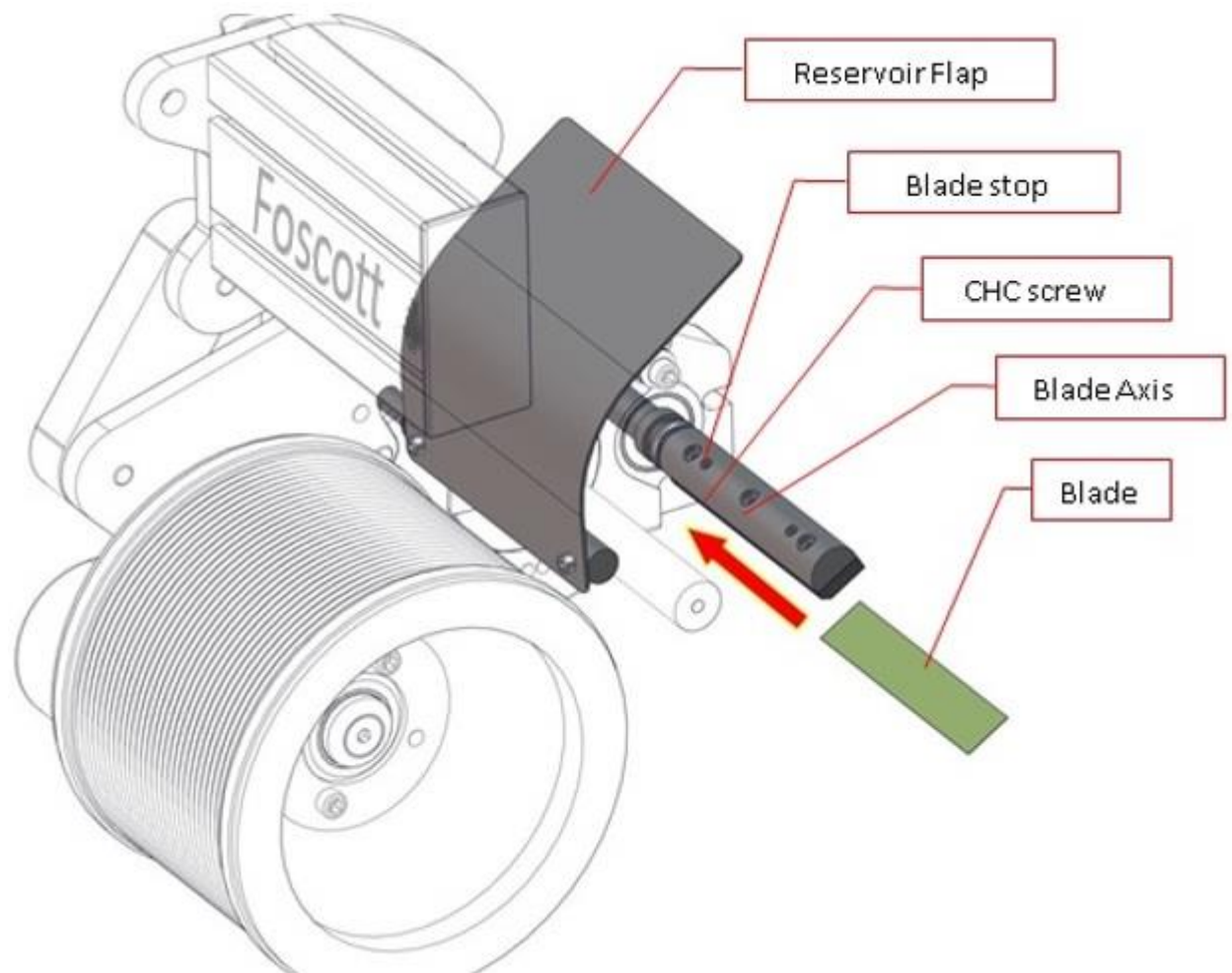
Cleaning Kit

The kit contains a sprayer and two nylon brushes.

Roller Cleaning Kit

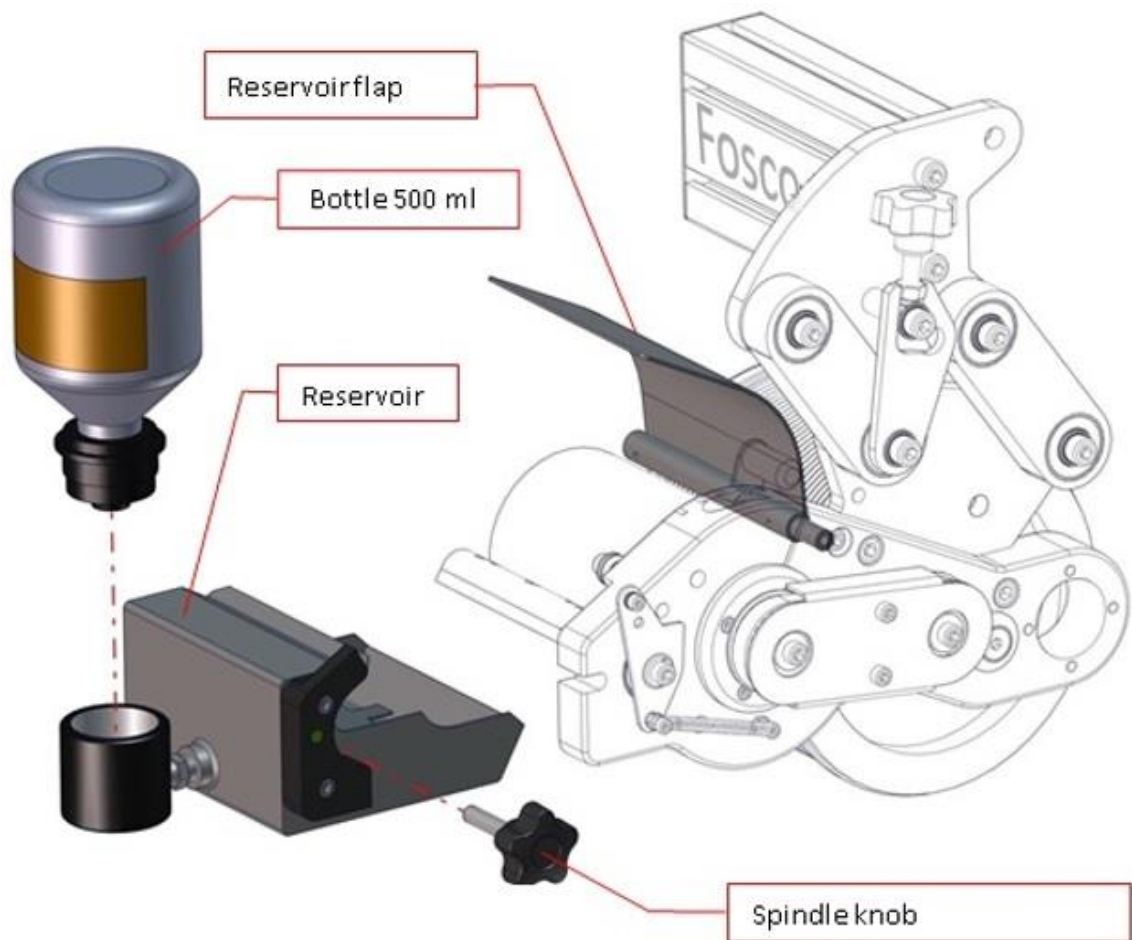
The kit contains a steel brush and a tube of special paste.

Changing the Scraper Blade



- Remove Roller (see paragraph on Roller)
- Remove the inkwell (see paragraph on inkwell)
- Unscrew the holding screw with a size 6 hex key
- Remove the used blade
- Re-fit the cleaned / new blade, beveled edge downwards
- Screw back the holding screw
- Check that the scraper is properly fixed.

Removing the inkwell

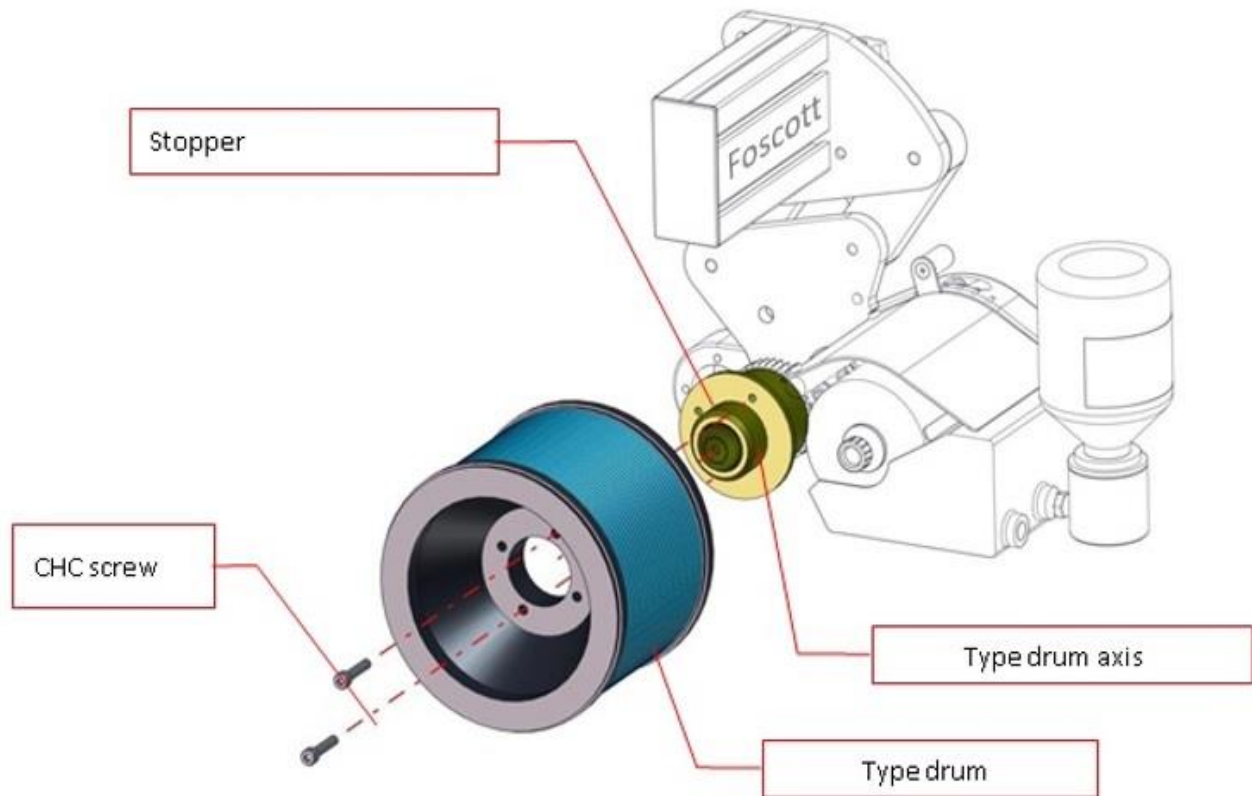


- Unscrew and remove the ink cartridge
- Lift the reservoir flap
- Unscrew the spindle knob
- Slide out the reservoir.

To re-mount the reservoir, repeat the same actions in inverse order. Check that the whole apparatus has been properly tightened and correctly fitted.

The reservoir must be held carefully in a horizontal position during removal to ensure that the ink does not spill.

Removing the type drum



- Unfasten and unscrew the drum screw with a size 6 hex key
- Remove the type drum

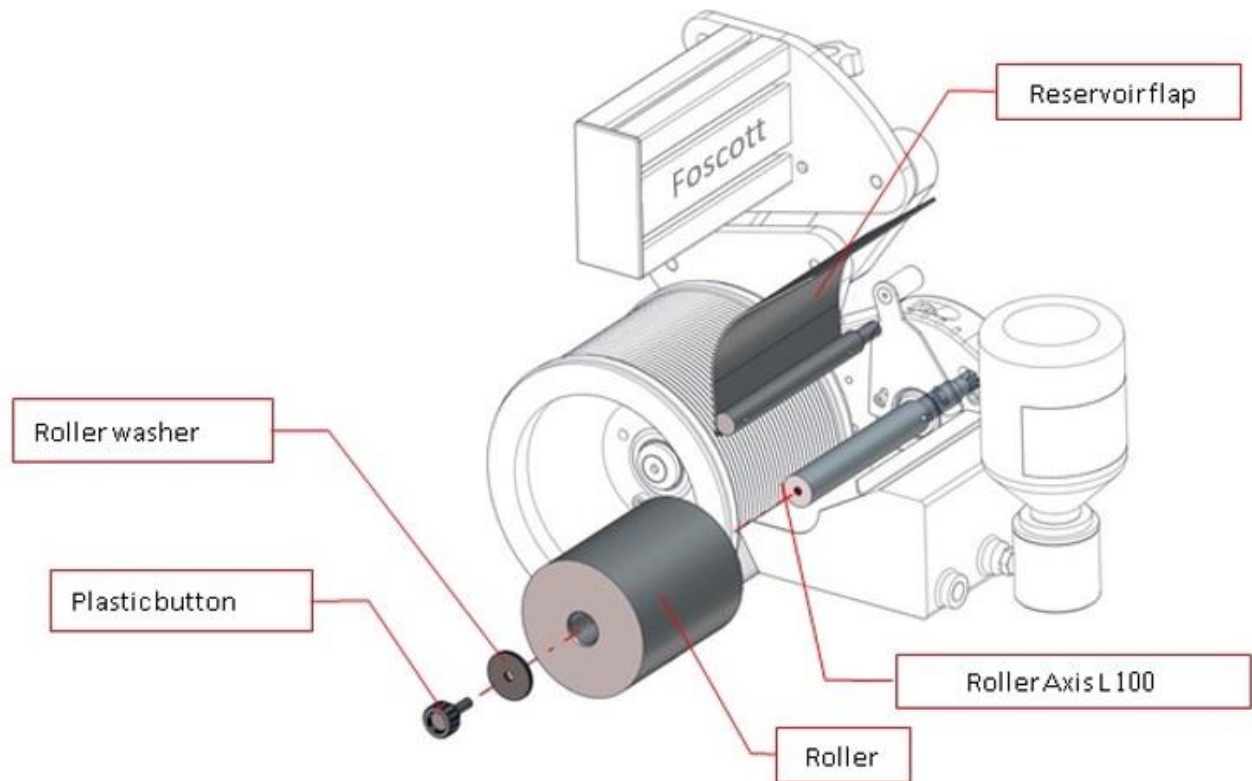
Mounting the type drum

- Insert the type drum on its shaft fixing it into place with the help of the stopper
- Screw on the drum with a size 6 hex key
- Check that it is properly fastened.

Cleaning the Roller

- Use CP009 along with the brushes provided in the cleaning kit for daily cleaning
- For monthly maintenance or for a production break of over a week, remove the Pick-up roller and clean it using the special paste and metal brush provided in the Roller cleaning kit.

Removing the Roller



- Lift the reservoir flap.
- Unscrew and remove the plastic button and the washer.
- Remove Anilox from its shaft

Care must be taken to ensure that the outer surface of the pick-up roller is not scratched or damaged

To re-fit the Roller, repeat the same actions in inverse order.
Check that everything is fitted back properly.

Cleaning and maintenance periodicity

After use

Clean:

- The plates.

Daily

Clean:

- Plater-holder drum
- Scraper blade, handle and shaft
- Roller
- **Roller** shaft
- Reservoir

Before each ink change

Clean:

- Type drum
- Scraper blade, handle and shaft
- Pick-up roller
- Pick-up shaft
- Reservoir

Monthly or in case of production break of over 1 week

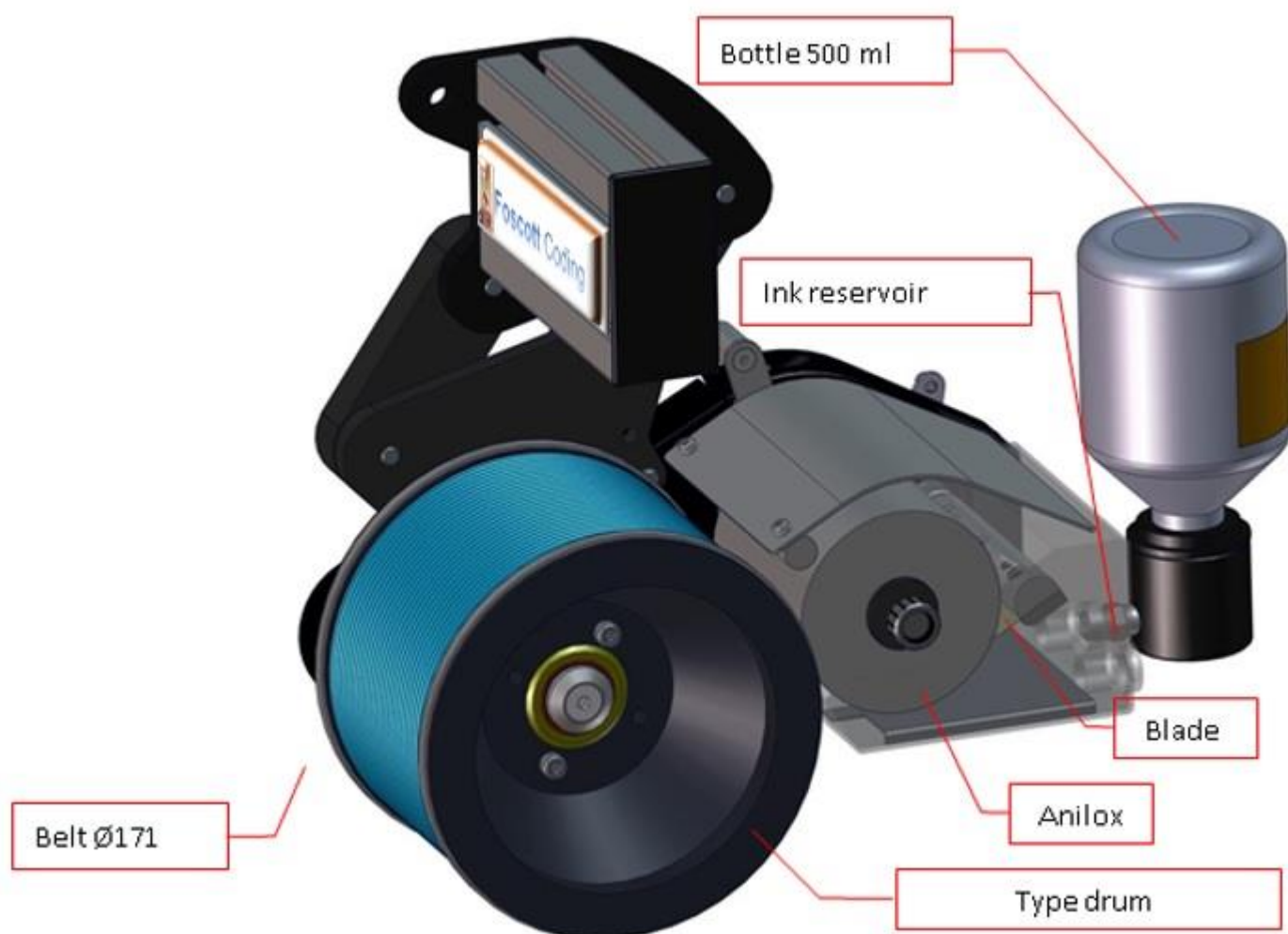
Clean and service:

- Type drum.

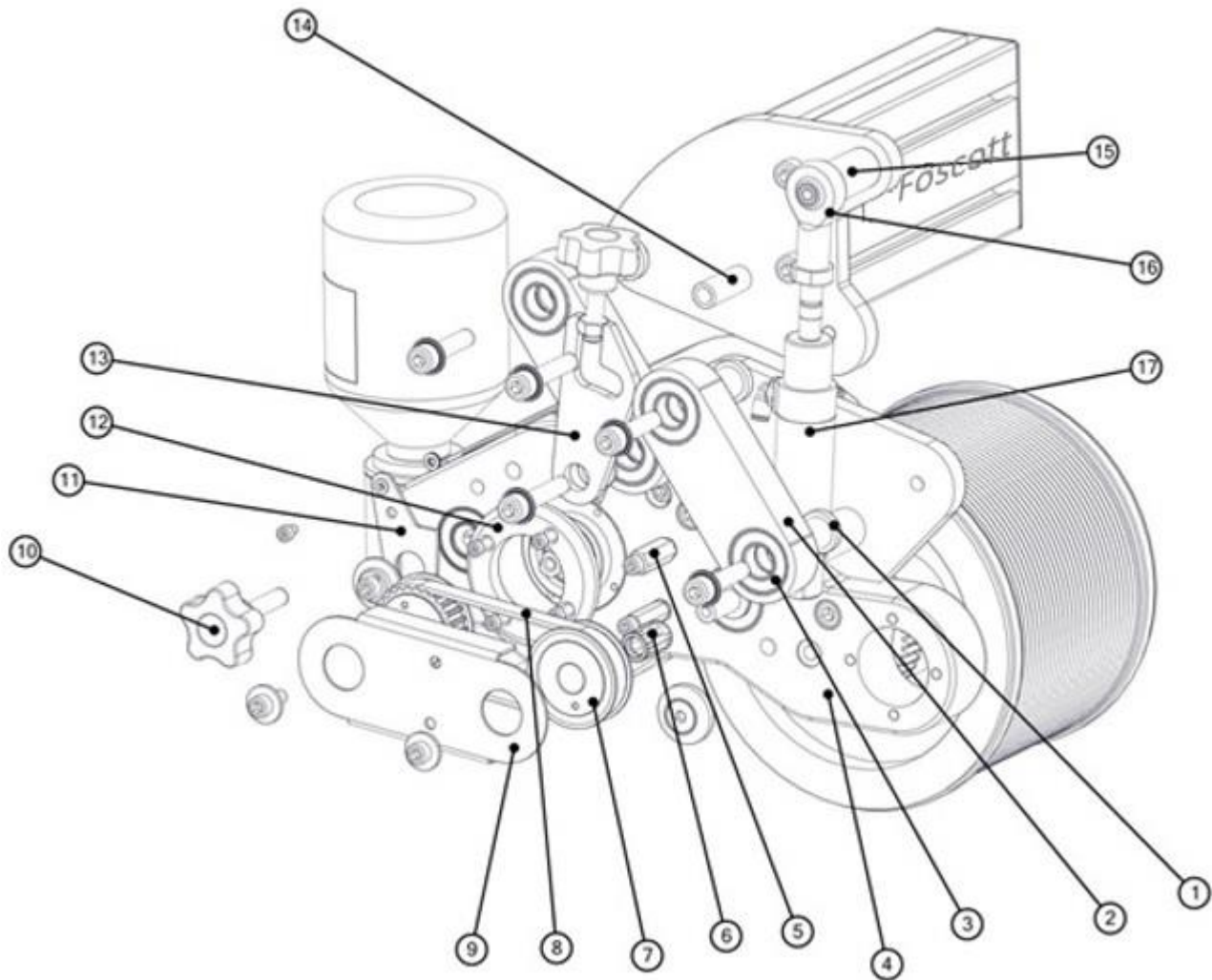
Remove, clean and service:

- Scraper blade, handle and shaft
- Roller (with roller cleaning kit)
- Roller shaft
- Reservoir

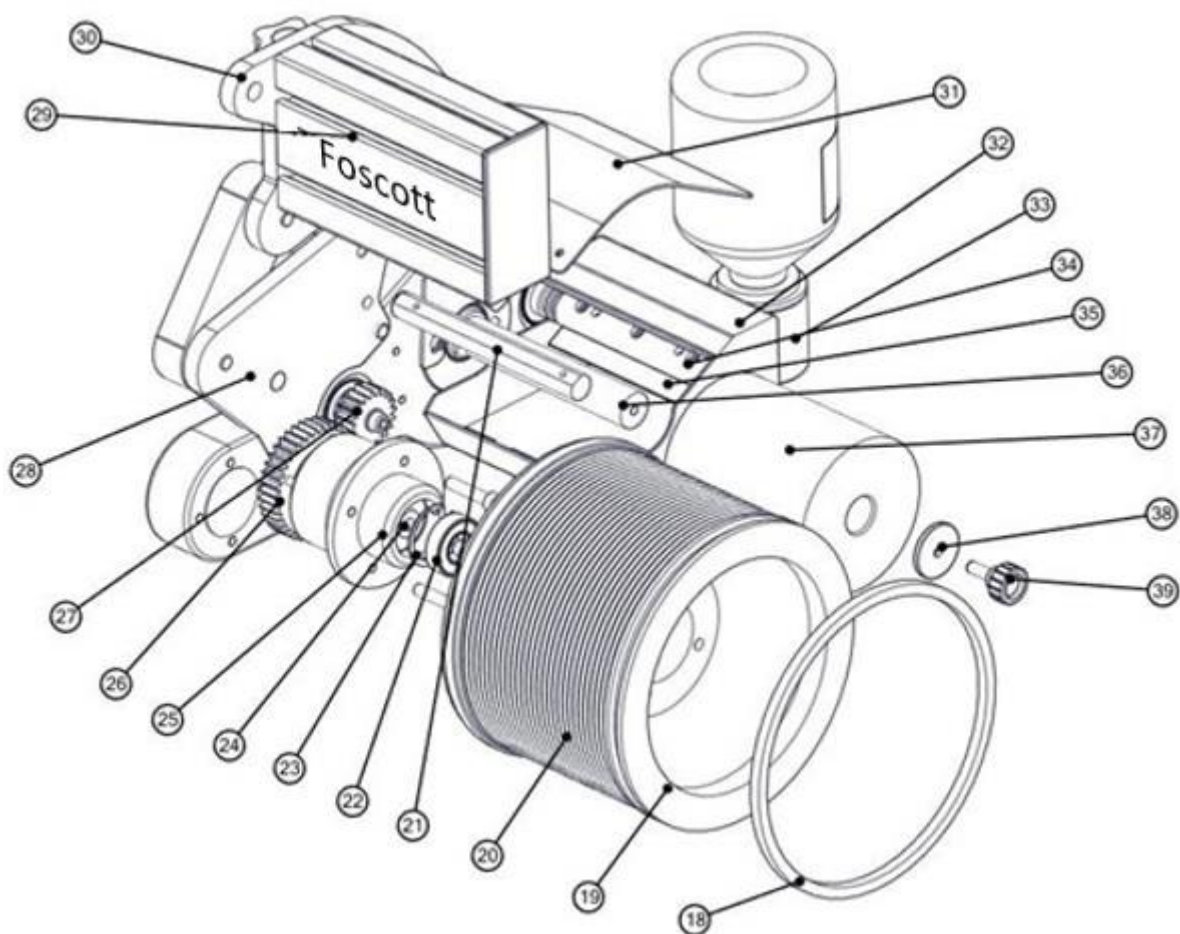
Spare parts



General Break-up of components



Number	Part
1	Stretching screw axis
2	Stretching screw
3	Bearing 6002 ZZ
4	Holding frame
5	Hexagonal brace
6	Idler
7	Pulley
8	Grooved belt
9	Protection cover
10	Knurled Knob
11	Spring Index
12	Stop ring
13	Pressure adjustment
14	Plate brace
15	Lift brace
16	Aligning clevis
17	Pneumatic lift



Number	Parts
18	Belt
19	Drum
20	Grooved base
21	Flap axis
22	Bearing 6002 ZZ
23	Internal Circlip
24	Drum shaft
25	Bearing
26	Cog wheel
27	Gear wheel
28	Base plate
29	Bracket
30	Upper plate
31	Flap
32	Reservoir
33	Insert
34	Blade holder
35	Blade
36	Pick-up roller shaft
37	Pick-up roller
38	roller washer
39	Button

Troubleshooting

DEFECT	INDICATION	ACTION
No printing	No ink	<ul style="list-style-type: none"> ○ The bottle is empty ○ Ink does not flow out of the bottle.
	The drum is not touching the printing material	<ul style="list-style-type: none"> ○ Unlock the drum from high position and set it on low position ○ Set the drum pressure against the printing material
	Drum not exactly parallel to printing material	<ul style="list-style-type: none"> ○ Re-align the printing material.
Poor quality printing	Ink not equally deposited on printing material	<ul style="list-style-type: none"> ○ Adjust Anilox pressure on characters ○ Clean or change scraper blade ○ Clean Anilox ○ Clean plates.
	The material slips or slides off the drum	<ul style="list-style-type: none"> ○ Adjust pressure of drum against printing material ○ Clean belt ○ Change belt.
Difficult or impossible to mount plates	Difficult to interlock plates on the drum (especially large formats)	<ul style="list-style-type: none"> ○ Spray AERONET on the grooves of the drum and the plates.

Additional products

Cleaning agents

NETTOL

Thinner in 5l cans. Check that the thinner is compatible with the type of ink used.

AERONET

Spray thinner, specifically recommended for cleaning the characters.

Absorbent cotton wadding

Roll of 800m. Pre-cut to 40 by 30cms for easy cleaning.

Hygiene products

Protective cream

240ml spray can. Protects hands and arms from inks and solvents

Gel soap

5l cans. Useful for washing off ink, and soft on the skin. The soap is biodegradable. The can comes equipped with a pump and wall bracket.

Recycling

Packaging

See paragraph : Shipping and handling.

Shipping

See paragraph : Shipping and Handling.

Recycling

The material must be recycled or disposed off according to the prevalent rules and laws.

Terms of Warranty

All spare parts and repairs for this Foscott product are fully guaranteed for a period of six months from the date of start up

The warranty covers any manufacturing defects - the following are excluded from the warranty:

- Non-conform uses
- Use of the machine for any purpose other than the specified uses or inappropriate uses of the machine
- Defective or incorrect electric power supply
- Wear and tear
- Defective maintenance
- Breakdown caused by non-observance of points in user manual
- Breakdown due to equipment not included in the manual
- Repairs without Foscott intervention or prior authorization of Foscott
- Use of non-Foscott spare parts

The warranty is effective after prior agreement, at the client site (by our services or by the client) and includes replacing the defective parts. Packaging and shipping costs are to be borne by the client.

No compensatory damages will be due for any consequential or incidental losses incurred.